

Unloading valves

Type DA700
up to 700 bar
NG 6 up to 25 l/min

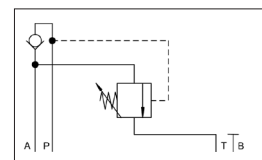
Features

- Direct operated valve
- Pressure stability
- Safe operation
- Precise pressure adjustment
- Porting NG 6 according to DIN 24340
- Maximum pressure setting with lock nut



Applications

The valve serves to shut-off the low-pressure flow depending on the prevailing pressure. As soon as the system reaches the pre-set shut-off pressure, the low-pressure flow is switched to non-pressurised circulation, so that only the HP pump delivers into the system. Once the pressure drops below the pre-set value, the low-pressure flow is added again. As the maximum shut-off pressure is secured by lock nuts, it cannot be exceeded by accident.



Technical data

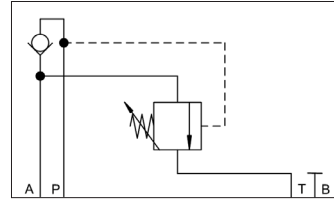
Hydraulic fluid	mineral oil according to DIN 51524 (other fluids on request)	
Fluid temperature range	- 20 to 80 °C	
Ambient temperature range	- 30 to 50 °C	
Viscosity range	5 to 400 mm ² /s	
Porting	NG 6 according to DIN 24340/ISO 4401/CETOP RP 121 H	
Max. operating pressure connection P	700 bar	
Max. operating pressure connection A, T	350 bar	
Druck-Einstellbereich Anschluss LP	25 bis 150 bar	
Max. flow rate	25 l/min	
Filtration (recommendation)	according to NAS 1638, class 6 or ISO/DIN 4406 17/15/12	
Weight	2.1 kg	
Material/ surface treatment	housing	steel, galvanized, chromated
	cartridge	steel corrosion resistant
	adjusting knob	plastic

Product information

Type	Part number
DA700-6-A-350-V-*00	3682115

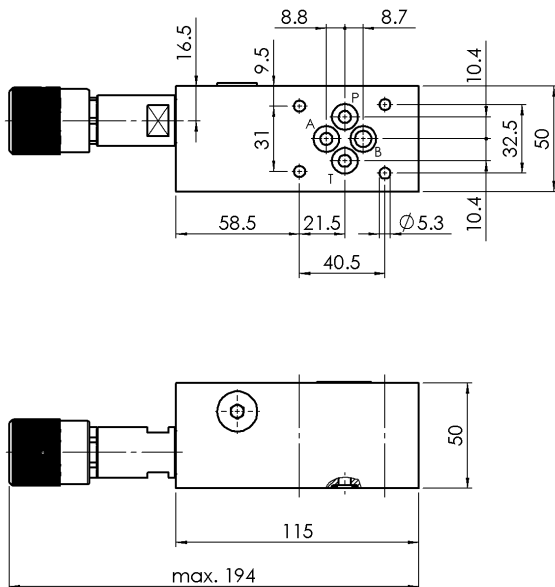
Note: The unloading valve is designed as end valve.

Hydraulic schematic



- A Connection for low-pressure pump
- P Connection for high-pressure pumps
- T Tank connection

Dimensional drawing



Accessories

- For each valve the following is included:
- 4 pieces O-rings 9,25 x 1,78 mm 90° ShA
- 1 Adjusting knob mounted
- 1 Cap in addition

Tie bolts/ fixing screws and subplates
see technical data sheet AP/ RP

Type DA700

to 700 bar
NG 6 up to 25 l/min